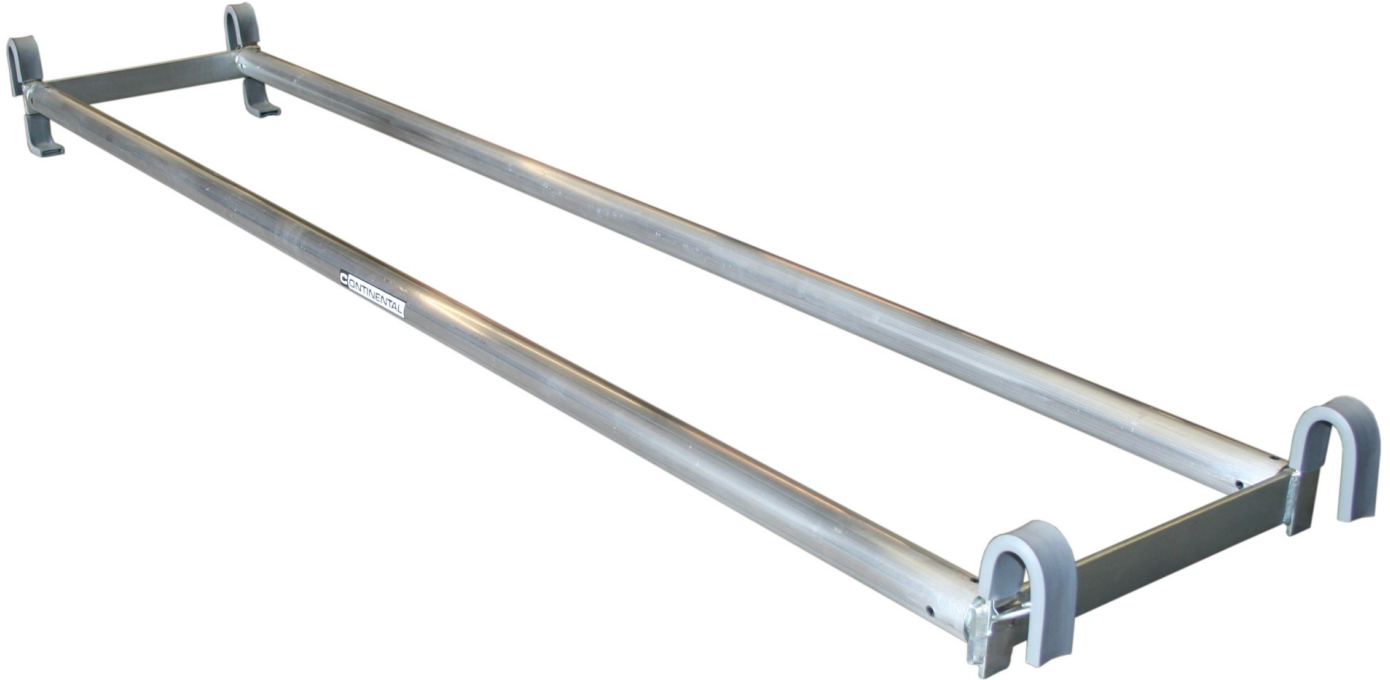


Double pole

09397AXXXX



Details

Double poles are useful for linking on both fixed and portable equipment.

These parallel poles are versatile, lightweight and strong and have double hook protectors with safety locks at both ends.

Available in two lengths:

- 2.1m (7') available in a steel or aluminium construction
- 3.0m (10') in aluminium only

Which size do I require? - For linking between pieces of portable equipment such as nesting tables and trestles, any length is suitable. For linking between wall fixed ladders and climbing frames or between wings of climbing frames it is important that you select the correct size:

- 2.1m (7') poles are required for linking from a steel 3-gate Foldaway climbing frame and a wall fixed ladder
- 3.0m (10') poles are required for linking between pairs of wall hinged climbing frames

SKU	Options	Available Colours
09397A02AA	2.1m (7')	N/A
09397A01AA	2.1m (7')	N/A
09397B01AA	3.0m (10')	N/A