

**CONTINENTAL
SPORTS LTD**

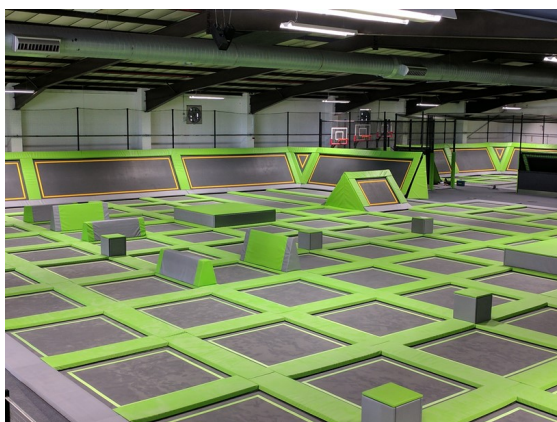
**CREATING YOUR TRAMPOLINE PARK -
FAQ'S**



Continental Sports Ltd
Millgate, Huddersfield, HD1 4SD

+44 (0)1484 542 051
sales@contisports.co.uk
www.continentalsports.co.uk

Continental Sports is the UK's largest manufacturer of equipment for gymnastics and trampolining, physical education, sports halls and trampoline parks.



Trampoline parks have been increasingly popular in the USA for the past few years and have been experiencing huge growth in the UK and Europe. A trampoline park consists of a large number of trampolines with padding between and around them and incorporates various "Zones" to allow for different bouncing activities.

At Continental we have leveraged our experience of more than 50 years of manufacturing and installing gymnastics and trampolining equipment to develop a modular system for trampoline parks.

We are regularly approached by potential customers asking for advice on how to set up their own trampoline park so we have compiled the most frequently asked questions here. After reading this document if you would like to discuss your project further or have questions that are not answered here, please call us for a discussion or to arrange to visit our designers, estimators and technical sales team.

HOW MUCH SPACE DO I REQUIRE TO OPERATE A TRAMPOLINE PARK?

We would recommend 20,000 to 30,000 sq ft (1,900 to 2,800m²) or more to provide the optimal experience to your customers and financial payback to the operator. Smaller parks are also financially viable but we would

suggest any smaller than 10,000 sq ft (930m²) starts to lessen the experience to your customers and should therefore be avoided.

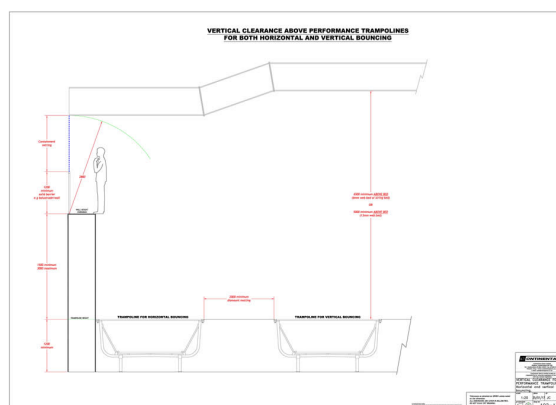
Remember that trampoline or similar activities will typically comprise 55% to 70% of your total floor area with the rest being used for ancillary activities such as café, viewing, reception etc.

The larger your venue, the bigger the impact and "wow" factor on your customers resulting in higher attendance levels.

WHAT CEILING HEIGHT DO I NEED IN MY TRAMPOLINE PARK?

We recommend a minimum clear height from the floor to the lowest roof obstruction of 5.2m for standard park trampolines in accordance with PAS5000:2017. If you have pitted areas that require trampolines to be higher above the ground we would suggest aiming for a clear height of 6m or more if possible in that area.

For performance trampolines used for vertical bouncing or walk-the-wall trampolines for horizontal bouncing, you need 5.5m to 7m as a minimum clear height.



If not all of your building is quite 5.2m then with some clever design and a suitable risk assessment we may be able to accommodate your park - so if you find an unusual building or one with some lower ceiling heights, please contact us for advice. We will also be pleased to arrange to survey your building following acceptance in principle of a budget quotation.

Please remember to think about lighting, air conditioning or fans that may take up roof space when planning your park and choosing your building.

DO I NEED PLANNING PERMISSION?

In the UK you will need D2 planning permission and leisure usage. If you are selecting an industrial unit the main problem regarding planning consent is normally the amount of parking so it is important to understand your traffic plan and how many vehicles will visit your park at any one time based on its capacity.

WHAT WILL MY PARK COST TO FIT OUT?

We cost the different areas (e.g. pitted areas, raised walkway areas, main jumping areas, basketball runways etc.) accurately using a Bill of Material for each item to reflect your preferred layout, but then we can combine that to give you an average cost per m2.

The majority of elements are priced between £205/m2 and £325/m2 but some of the smaller footprint elements such as digital interactive activities can cost up to £800/m2. The average price for a typical size park is normally around £285/m2 but does depend on the mix of activities you offer and your layout. A typical 25,000 sq ft facility with 60% activity area and a typical mix of activities will cost around £350,000 to £400,000 + VAT for the activity related items (i.e. trampolines, Ninja courses, obstacle courses, Parkour areas) including airbags, foam pits, circulation areas, steps and balustrade. However please use this as a guideline for your budgeting - there are many variables and our costing methodology is far more detailed and accurate than a simple price per square metre so please call to discuss your project and to obtain an accurate costing.

The lowest cost items in a trampoline park are standard square trampolines. The larger the park, the bigger the

proportion of the lower cost items, so the lower is the resulting price per m2 overall.

As a manufacturing company we also offer a wide range of different specifications for many elements of our trampoline park system. Our standard system is the spec that we recommend, but we can remove some elements or provide a lower spec to save costs and equally we can provide additional elements and higher specs to certain areas to improve the look and functionality of your park. All these options and cost implications are discussed and explained at your meeting with our designers and estimators.

You will then have additional costs for your ancillary areas (lockers, reception, café, toilets etc.), decoration such as wall art and any services you require (lighting, heating, air conditioning).

HOW LONG DOES IT TAKE TO BUILD THE PARK?

From receipt of your order (which must include formal approval of a definitive layout and confirmation of colour choices) to final installation will normally be 3 months. We manufacture everything in-house in our 100,000 sq ft factory in Huddersfield. We then bring everything to site in our own fleet of HGVs and our in-house team of installation technicians install the system.

The first 4 to 6 weeks of the process is in-house manufacture with installation taking place from 6 weeks onwards until completion.

The raised walkway, or "podium" between the different activities is something that Continental can provide or it can be provided by your fit-out contractor or builder. If the podium is supplied and installed by others, this can reduce Continental's time on site by typically two weeks.

DO YOU HAVE SAMPLE PLANS YOU CAN SEND ME?

We have a range of designs and 3D images available for a range of building sizes from 10,000sq ft to 60,000sq ft that we would be pleased to send to you.

As soon as you identify a potential building then if you can provide us with architectural plans of the building (or a dimensioned sketch) our in-house designers will work up a 2D CAD layout based on your suggestions or using our experience.

Once we have agreed the layout that best suits your needs we will provide a quotation and if the quotation is acceptable we will provide a 3D render of the park with shots from various angles that you can use for marketing the park to investors or your potential customers.

WHERE ARE THE TRAMPOLINE COMPONENTS MADE?

We manufacture all elements in our factory in Huddersfield and are not reliant on anyone else's trampoline park design or components.

We have manufactured bespoke sports equipment for over 50 years and can therefore work with you to design and manufacture bespoke elements to your park should you wish.

DO YOU INSTALL TRAMPOLINE PARK SYSTEMS OUTSIDE THE UK?

Yes. We can export a system to your facility anywhere other than North America. We have recently received orders for parks in Luxembourg and Spain with projects in Switzerland and France currently in our pipeline.

We have undertaken installations of sports halls and gymnastics facilities in Armenia, Abu Dhabi, Dubai, Sharjah, Sudan, Malaysia, Ethiopia, Australia and many

other locations and can send the equipment with an installations manager to work with your teams or we can send full teams out to fully fit out your facility.

WHAT WARRANTY DO YOU PROVIDE?

Our business has been in existence for 50 years in the UK. We are the leading manufacturer of sports hall equipment, gymnastics equipment, physical education equipment and competition trampolines in the UK. We are a partner of the Federation Internationale de Gymnastique (the worldwide governing body of gymnastics and trampolining). It is our reputation in the field of gymnastics and trampolining that is your best warranty protection.

It is vital to us that our reputation is upheld and reinforced by our trampoline park system installations.

Our standard formal warranty in respect of manufacturing defects is 12 months.

AM I RESTRICTED TO YOUR STANDARD COLOURS?

Our designers will work with you to reflect your distinct branding, style and chosen look & feel or if you prefer we can suggest a scheme for your facility. We manufacture everything in-house so your choice of design variations is virtually unlimited.

We offer 6 colour choices for the trampoline bed – light blue, dark blue, green, red, grey and black. Our jumping surface is UltraMesh which is an anti-slip heavy duty mesh that is much more pleasant to jump on than the shiny black material used by most trampoline park systems.

We incorporate a second redundant layer under the UltraMesh (as required by the PAS5000:2017 standard) of USA made Permatron woven polypropylene.

Around the bed we incorporate sewn in no-jumping zone borders. Those are available in 12 different colours. They can be consistent throughout your facility or you can use different colours in different areas - there are no restrictions as we sew all our beds in-house.

We offer 27 different colours of PVC for your padded elements (trampoline coverall pads and padded panelling). You can mix and match colours around and within your facility in any way you choose - our designers will work with you to show you how different colour combinations look in a 3D render.



Our metal framework is epoxy powder coated in matt black as standard but if for any reason you would like any other colour we offer 216 different colours!

WHAT IS SPECIAL ABOUT A CONTINENTAL TRAMPOLINE PARK ?

We offer a fully UK manufactured system, made in our factory in Huddersfield with ISO9001:2008 quality assurance.

We incorporate as standard various unique design and safety features including:

UltraMesh beds - we can explain the full difference between UltraMesh and standard shiny black polymesh when we meet you, but if you could go and bounce on a trampoline with a standard shiny black polymesh bed before you visit us we won't need to explain how much better UltraMesh really is. Our beds are significantly less

slippery. We incorporate a second redundant bed layer underneath the UltraMesh made from Permatron - high strength woven polypropylene.

Bed jumping boundaries - sewn in polyester webbing to show your customers where they should and shouldn't jump

Spring protectors - innovative PVC covers with bungee cross-ties attached using VELCRO® fasteners to the beds that provide a snug protective layer between the coverall pads and the springs. This means if a hand or foot goes under the pads the customer cannot touch springs - just the PVC cover.

Netting and rebound panels - behind angled trampolines our system incorporates netting from above the top of the bed down to approximately 1m above the floor. Below that we have a carpet covered rebound panel with an aluminium kickplate. This ensures your customers can't walk behind an angled bed and inadvertently (or purposely) have a collision with a jumper on the bed.

Epoxy powder coated steel frame - the quick and easy way to finish the steel is hot dip galvanising, but we provide a significantly more attractive finish than that with a hard-wearing epoxy powder coating to all metalwork.

Aesthetics - we have spent a lot of time working on our design to ensure that people will easily be able to tell apart a Continental made trampoline park and any other trampoline park due to the obvious quality, rigidity and engineering of our system. Our chamfered coverall pads, our rebound panels, our podium and our beds make our system the most attractive system available - the quality and attention to detail is clear.

CAN I SEE AND TRY OUT A CONTINENTAL TRAMPOLINE PARK?

Absolutely – we have completed the installation of more than 30 trampoline parks and we can arrange for you to visit any of those. Our parks include:

Adrenaline (www.adrenaline-international.co.uk)	Liversedge
Air Arena (www.airarena.co.uk)	Chichester
Air Kings (www.airkings.co.uk)	Doncaster
Air Kings (www.airkings.co.uk)	Scunthorpe
Air Space (www.air-space.co.uk)	Wolverhampton
Air Space (www.air-space.co.uk)	Stevenage
AirVault (www.airvault.co.uk)	Bolton
Atom (www.atomtrampolinepark.co.uk)	Reading
Base Jump (www.basejump.co.uk)	Rayleigh
Bounce (www.bouncegb.com)	Peterborough
Bounce (www.bouncegb.com)	Ipswich
Freedog (www.freedog.com)	Swindon
Freestyle (www.freestyle-uk.com)	Nottingham
Gravity (www.gravity-uk.com)	Maidstone
Gravity (www.gravity-uk.com)	Norwich
Gravity (www.gravity-uk.com)	Hull
Gravity (www.gravity-uk.com)	Edinburgh
Imagination Street (www.imaginationstreet-redditch.co.uk)	Redditch
Infinity (www.infinitytrampolinepark.co.uk)	Cardiff
Isle Jump (www.islejump.co.uk)	Isle of Wight
Jump Arena (www.jumparena.co.uk)	Cardiff
Jump Arena (www.jumparena.co.uk)	Gateshead
JumpBox (www.jumpbox.lu)	Luxembourg
Jump One (www.jumpone.co.uk)	Barnsley
Jump Rush (www.jump-rush.com)	Morecambe
Jump Xtreme (www.jumpxtreme.co.uk)	Bolton
Jump Xtreme (www.jumpxtreme.co.uk)	Tamworth
Orbital(www.orbitaltrampolinepark.com)	Luton
Oxygen (www.oxygenfreejumping.co.uk)	Acton
Oxygen (www.oxygenfreejumping.co.uk)	Southampton
Oxygen (www.oxygenfreejumping.co.uk)	Manchester
Oxygen (www.oxygenfreejumping.co.uk)	Leeds
Spring City (www.springcity.co.uk)	Liverpool

We strongly recommend you visit our factory in Huddersfield to see our trampoline parks (and other product lines) being manufactured. We can organise visits to nearby parks in Leeds or Manchester.

If you are coming to visit us, we are located minutes off the M62 between Leeds and Manchester and 5 minutes from Huddersfield railway station.



Before you invest a substantial sum in your trampoline park we strongly recommend you visit us to gain comfort with the scale and substance of our operations. We also make a wide range of matting, gymnastics equipment, Parkour systems, and furniture for changing rooms including bench seating and lockers which may be of interest to you in your trampoline park plans.

We also strongly encourage you to visit any other potential supplier so you can compare the quality of the team of designers and engineers who will be working with you and so you can become comfortable and get to know your park suppliers. We are confident that you will be able to fully trust Continental with your facility and investment.

WHY SHOULD I CHOOSE CONTINENTAL TO SUPPLY MY TRAMPOLINE PARK EQUIPMENT?

Who we are - Many trampoline park customers may not have heard of Continental Sports, but we are the leading manufacturer of sports hall, gymnastics and trampolining equipment in the UK. Most people will recognise our name as the gymnasium equipment they used at school - our wall bars, vaulting boxes, crash mats and springboards have been in most schools in the UK for some 50 years.



MADE IN THE UK

Recognised expertise - We are a family owned UK based company that has been involved in gymnastics and trampolining since its beginnings in the UK. We are the only UK manufacturer with a full set of gymnastics equipment certified by the worldwide governing body of trampolining, the FIG. Continental worked in conjunction with British Gymnastics to write their standard documents on trampoline spotting rigs and foam dismount pits, and jointly developed with British Gymnastics our range of ModuBlox equipment for Parkour and Freestyle Gymnastics.

Trampoline park experience – We have installed over 30 trampoline parks, for both one-off and multiple site operators. We have significant experience of how to ensure your project proceeds smoothly through manufacturing and installation.

Industry knowledge – Our Managing Director, Nick Booth, is a member of the International Association of

Trampoline Parks' UK Sub-Committee. Nick represented Continental on the steering group organised by the BSI to write the recently published British Standard PAS5000:2017 – so we have a through understanding of that standard. Nick speaks on the subject of trampoline parks at industry events including the recent IATP annual conferences (Denver, Nashville and Palm Springs) and the first inaugural European IATP annual conference in London.

Trampolining specialists - We have made thousands of standard school, club and competition trampolines that have been used at competitions including the trampolining world championships. Our specialist trampoline designers (including an ex-British Champion trampolinist in our development team) have designed large numbers of specialist trampolines including ones for rebound therapy and most recently for dryland diving training as commissioned by British Diving.

Gymnastics experience - We are the largest manufacturer of gymnastics equipment in the UK and have fitted out more gymnastics training facilities in the UK than any other company. Standard elements of gymnastics facilities include trampolines (above ground and sunken in pits), foam filled dismount pits, fast-tracks (long narrow trampoline tracks), tumble tracks, cushioned flooring, padding, raised podiums - in other words most of the elements that are needed for a trampoline park. We have been fitting out facilities with this sort of equipment since well before trampoline parks ever existed.

Sports hall experience - we are the largest manufacturer of sports hall equipment in the UK. Several standard elements in sports halls are used in trampoline parks such as basketball goals, rebound walls and netting. Continental manufacture such items every day for a range of facilities.

UK manufacturer, installer and servicer - if you need spares or maintenance or want to add to your trampoline park or change its layout after opening we are here to help. You do not have to wait for shipments

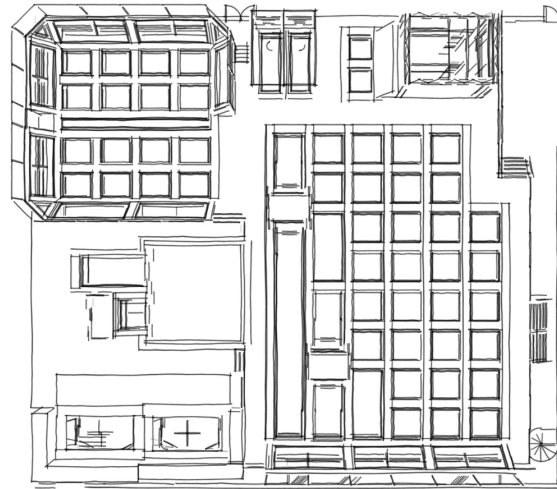
from China or the USA and you don't have to deal with shipping agents, customs or pay duties.

UK insurance - trampolining is a safe activity when properly undertaken and monitored, but even while being used properly trampolining has the potential to cause accidents and injury to the user. As an operator you will have insurance to deal with any claims (and the costs of dealing with such claims) but you will want the reassurance that the equipment you buy has not been negligently made or installed. To provide you with peace of mind we hold £15m of product liability insurance (more than any other UK supplier) and £2m of professional indemnity insurance all underwritten by a Grade A UK based insurance company and written under UK law - you won't have to try to enforce any claims against a USA, Chinese or other company if you buy from us.

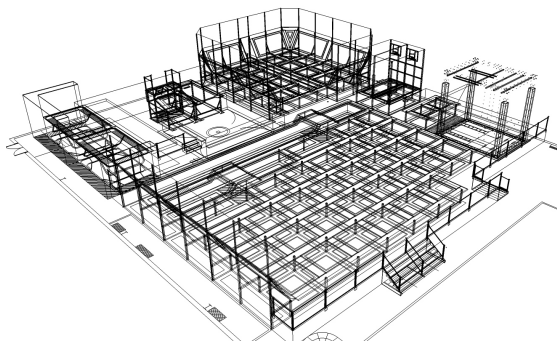
Payment and risk - you know who you are paying. We will generally require a deposit to commence manufacture. With Continental we can provide all the financial information you require to confirm your funds are safe with us. You are welcome to visit our factory to see your system being manufactured and in the unlikely event you have any concerns we are here and available to meet you in person to resolve any concerns.

Quality installation - you don't have to provide anyone to help with the installation. Unlike some overseas companies who require you to provide installation teams to install your park, we install every element of your activity area. Our in-house installation engineers install your park and all have CSCS cards (basic health and safety) and SSSTS (supervisor building site qualifications). We have Constructionline and Acclaim H&S certification. In our main business we work day in day out for all Main Contractors (Carillion, Balfour Beatty, Lend Lease, Morgan Sindall, Kier etc.) and their health and safety requirements are as rigorous as it gets.

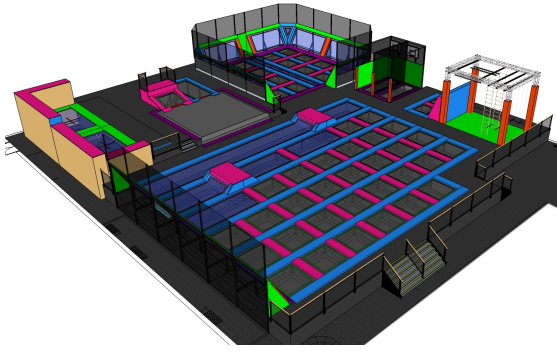
DO I NEED TO PAY FOR DRAWINGS?



No. Based on a dimensioned sketch or architectural drawings of your facility we will provide 2D drawings free of charge along with a quotation. If the quotation is acceptable to you we will request that you visit us to see our system and so you can discuss specification with one of our designers.



Following your visit we will provide a bespoke 3D rendered image of your facility. If you do proceed then once we have received your order we can provide a 3D fly-through movie on YouTube for you to show to investors, planners and customers.



WHAT ARE YOUR PAYMENT TERMS?

On receipt of your order we will check your credit status with our credit insurers. If we are able to obtain insurance on you then we would be pleased to offer credit terms. If you are a start-up business it is unlikely that we will be able to obtain credit insurance and payment terms will therefore be:

- 50% deposit with your order to commence manufacture
- 45% as stage payments during installation so that before the end of installation you have paid 95% of the cost.
- 5% final payment one month after installation at which point we transfer title to the equipment to you.

If you would prefer additional credit terms then subject to status we can offer you £50,000 credit for 3 months following installation for a fee of £750.

I AM INTERESTED IN STARTING DEVELOPING A PROJECT WITH CONTINENTAL. WHAT DO I DO NEXT?

We recommend you contact our sales team to discuss your project and how we may help.

You can do this in several ways:

Visit our [website](#) and submit an enquiry. We ask for various details and you can then send a description of

your project and your specific enquiry. We will then email or call you back - please let us know which you prefer.

Call our technical sales team on 01484 542 051 (+44 1484 542 051 from outside the UK) and ask for Jonathon Cliff or Troy Heptinstall.

If you would prefer to email without registering your details with us please email sales@contisports.co.uk

We can then discuss your facility and requirements and provide you with a bespoke quotation and layout drawing and agree how you would like us to work with you until the launch of your facility.

DO YOU KEEP SPARE PARTS?

When we fit out your park we will provide you with a small stock of spares - standard beds, springs, pvc and glue for any minor repairs.

Should you require any additional spares we maintain stocks at our factory in Huddersfield of all standard elements which we can supply on a next day courier service.

For any special items (e.g. special beds in your specific colourway) we will manufacture the part the next business day following receipt of your order and ship it the next day.

WHAT DIFFERENT ELEMENTS CAN YOU OFFER IN A TRAMPOLINE PARK?

At Continental we have used our huge experience of manufacture and installation of gymnastics and trampolining equipment to develop a modular system for trampoline park installation. We make and install everything for your jumping area leaving you free to concentrate on the ancillary areas (reception, waiting and rest area, toilets, café etc.).

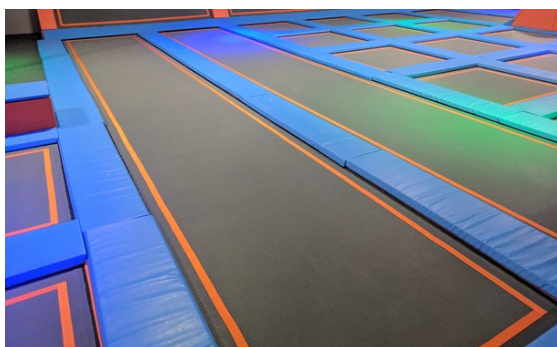
The elements we offer include:

Flat beds - small and large beds to make up the main bouncing area. Mainly squares, but also some shorter tracks are used to create the main jumping area.



Angled beds - at the edges to let you literally "bounce off the walls"!

Tracks - long track style beds to allow run-ups to basketball goals and for advanced bouncers to practice tumbles. Tracks can be any length – but remember only one person can use a track at any one time.



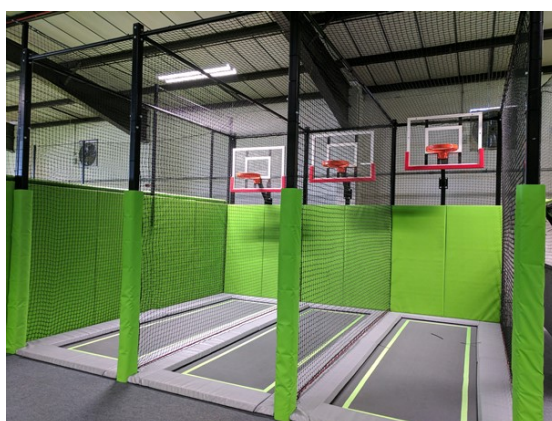
Dodgeball - netted zoned areas to play the amazing fun game of bouncing dodgeball!



Volleyball – we can integrate removable volleyball posts into a dodgeball court to increase the range of activities your park offers, or provide bespoke volleyball courts for larger facilities



Basketball - make slam-dunking a walk in the park by having the basketball board at the end of a trampoline zone!

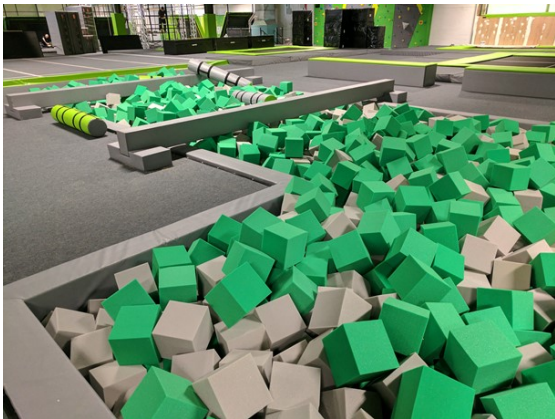


Padded rest zones - tactically located to land on and rest between bouncing sessions



Junior zones - smaller, lower trampoline zones for younger children to bounce often helped by parents or carers

Foam dismount pits - foam logs or cubes in huge pits to land in after somersaults or jumps, sometimes incorporating assault course elements such as Ninja Runs, Gladiator pits, ropes, handrings, scramble nets etc.



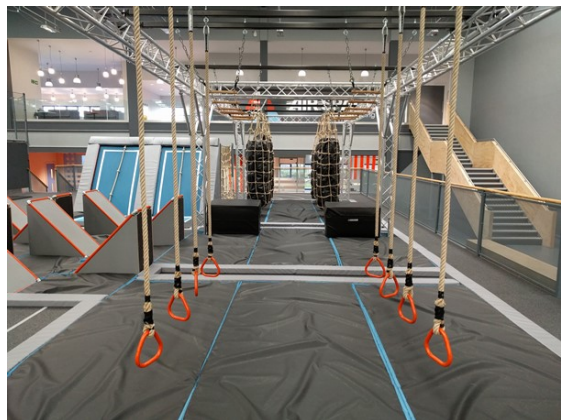
Airbag landing zones - enormous inflated airbags for huge landings. Entries include tracks, angled trampolines, jump boxes.



Parkour areas – incorporating our ModuBlox Parkour obstacles with blocks and poles along with gymnastics sprung tricking floors you take your trampoline skills to another level.



Ninja and obstacle courses – we design and manufacture obstacles and Ninja elements such as tic-tacs, ropes, ladders, poles, balance beams, apex ladders, monkey bars, sea of rings, vaults, crawl tunnels and many more, all with digital timing systems so you can organise timed challenges



Performance trampolines – Continental manufactures in house competition trampolines. These can be used within a trampoline park for coaching or practising skills by more accomplished trampolinists



Walk-the-wall - areas with recessed performance trampolines adjacent to walls to practise awesome Parkour skills



Fitness zones - an elevated single trampoline in front of an area of flat beds to hold instructor-led fitness classes - perhaps incorporating additional features such as ceiling suspended punch bags.



Interactive activities – Continental incorporates various computer controlled interactive fitness and skills challenges within its trampoline parks to provide excitement and another reason for your customers to keep returning.



And as Continental make all these elements and a vast range of sports equipment in-house, if you have seen something you want or have an amazing idea for a new element please talk to us - if it is possible (and safe) we can probably make it!

WHAT STANDARDS DO YOU COMPLY WITH?

Safety and construction standards and guidelines are something that we at Continental Sports take extremely seriously. Our physical education, gymnastics and trampolining equipment is in use in schools, gymnastics clubs, trampolining clubs and leisure centres throughout the UK and our reputation rests on our manufacture of equipment that is safe to use and of commercial robust quality suitable for institutional use.

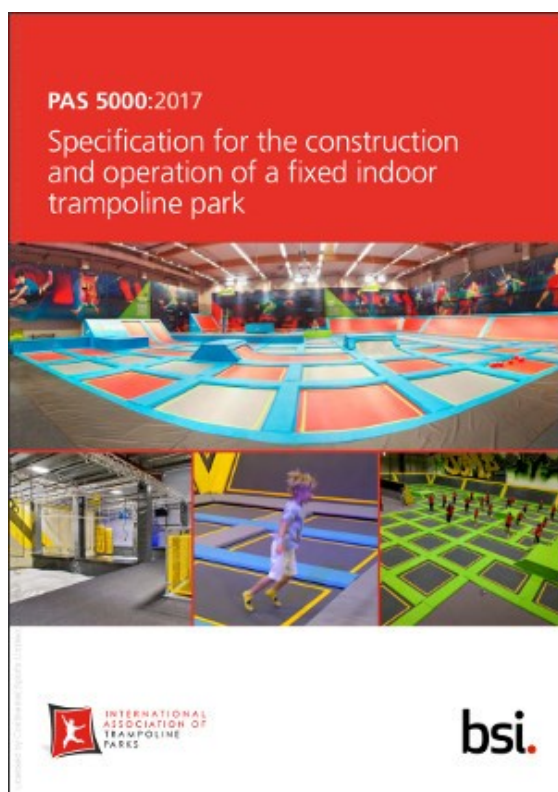
Wherever there is a relevant British Standard, European Standard or standard of the FIG (Fédération International de Gymnastique) then we comply with it. Our entire procurement, manufacturing and sales process is audited to ISO9001:2008 standard.

Until March 2017 there was no EU or British Standard relevant to the design and construction of trampoline parks. There was a USA standard issued by ASTM International: ASTM F2970 - 13 "Standard Practice for Design, Manufacture, Installation, Operation, Maintenance, Inspection and Major Modification of Trampoline Courts"

Continental's parks were originally manufactured to all construction standards stated in that guidance and in virtually all cases exceed the minimum requirement.

Continental worked with other safety-focused members of the UK trampoline park industry to develop a comprehensive British Standard. The development of this standard, PAS5000:2017, was funded by the International Association of Trampoline Parks and reflects from March 2017 all reputable trampoline parks in the UK should comply with it.

The standard sets out key design considerations and criteria but uses a risk-based approach in an attempt not to quash innovation but to maintain safety.



PAS5000:2017 also includes guidance on maintenance of trampoline parks and useful operational guidelines and requirements for park operators. We strongly recommend anyone considering opening a trampoline park purchases a copy to assist with your planning.

PAS5000:2017 is available from:

<http://shop.bsigroup.com/PAS5000>

CAN YOU HELP ME WITH THE OTHER ASPECTS OF SETTING UP MY PARK?

We are often asked if we can help build websites or booking systems, or if we provide finance or write operations manuals. We do not do that – we stick to the things we are good at which is the design, manufacture and installation of trampoline parks.

That isn't to say we can't point you in the right direction for those other necessary services, but we will leave you in the capable hands of experts in their own fields.

Unlike some trampoline park equipment suppliers we do not therefore have any financial incentive to push you to accept any particular website, sock supplier or slush drink supplier.

We have worked with trampoline park operators who have used different companies for these aspects of their business and we are pleased to provide contact details of two or three companies operating in the following fields:

- Booking systems
- Jump socks and court monitor clothing
- Drinks
- Lease / asset finance
- Insurance
- Sound, lighting, CCTV and security
- Operating procedures and staff training
- Health and safety management
- Architectural design
- Ancillary fit-out (reception, toilets, party rooms etc.)

We confirm we will never take a commission, introductory fee or kick-back from any of the above people we introduce. The price you pay those suppliers

will therefore be the best you can negotiate – we have no vested interest.

CAN YOU UNDERTAKE MAINTENANCE OF MY TRAMPOLINE PARK?

Our installation team will demonstrate to your team how to check and maintain all user-serviceable elements of the equipment prior to leaving site following the installation. You should not therefore need to call on Continental to undertake regular inspections of maintenance as the majority of servicing can be done by your team.

However, Continental Sports has a sports equipment maintenance division. We have a fleet of vehicles stocked with spare parts and knowledgeable, experienced maintenance technicians that travel around the UK undertaking contract planned and ad-hoc reactive maintenance of sports equipment, gymnastics equipment, trampolines and physical education equipment for schools, councils, clubs and leisure centres.

We normally undertake maintenance visits to each centre for planned maintenance annually or semi-annually depending on the level of usage. Given the risk profile and usage level of a trampoline park we recommend 3rd party maintenance is undertaken at least semi-annually and ideally quarterly.

Our engineers check all welds, nuts, bolts, pads, springs, nets, boards etc. and carry out as many repairs on site as they can. Any major remedial work is then quoted for to be carried out on a later date. We then provide a health and safety certificate for you to display in your premises to confirm we have undertaken the work and left the park in a safe state.

We charge for this service on a time and materials basis - please contact us to discuss budget pricing.

IS THERE A GOVERNING BODY OR TRADE ASSOCIATION FOR TRAMPOLINE PARKS?

The International Association of Trampoline Parks is the worldwide trade association for trampoline park operators.

The IATP has set up a UK committee (on which Continental is represented) and has invested significant time, and funds in developing the UK side of its operations.



Continental would strongly recommend any prospective trampoline park operator joins the IATP:

www.indoortrampolineparks.org to provide details of best practice, opportunities for ongoing education and training, and networking opportunities.