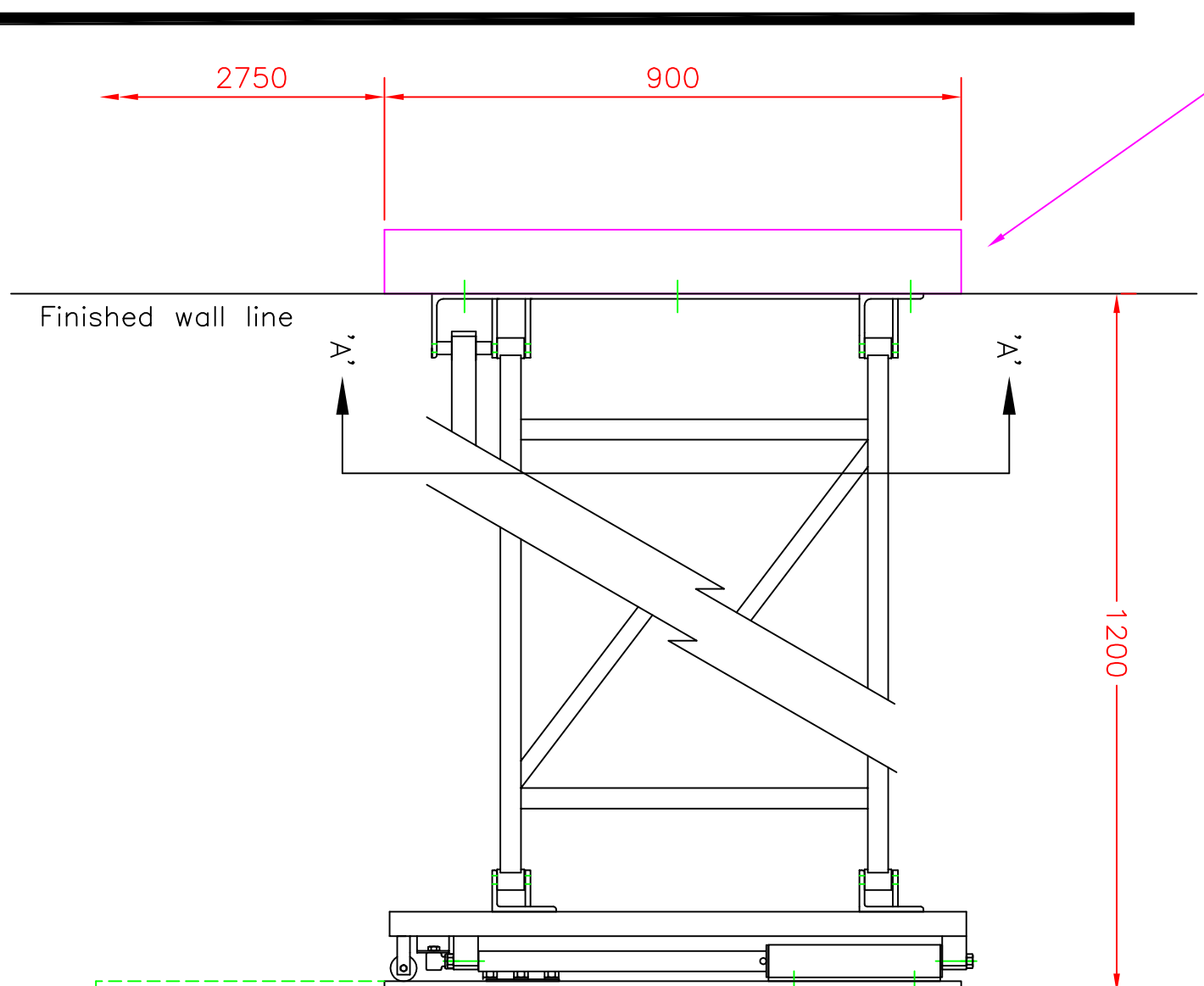
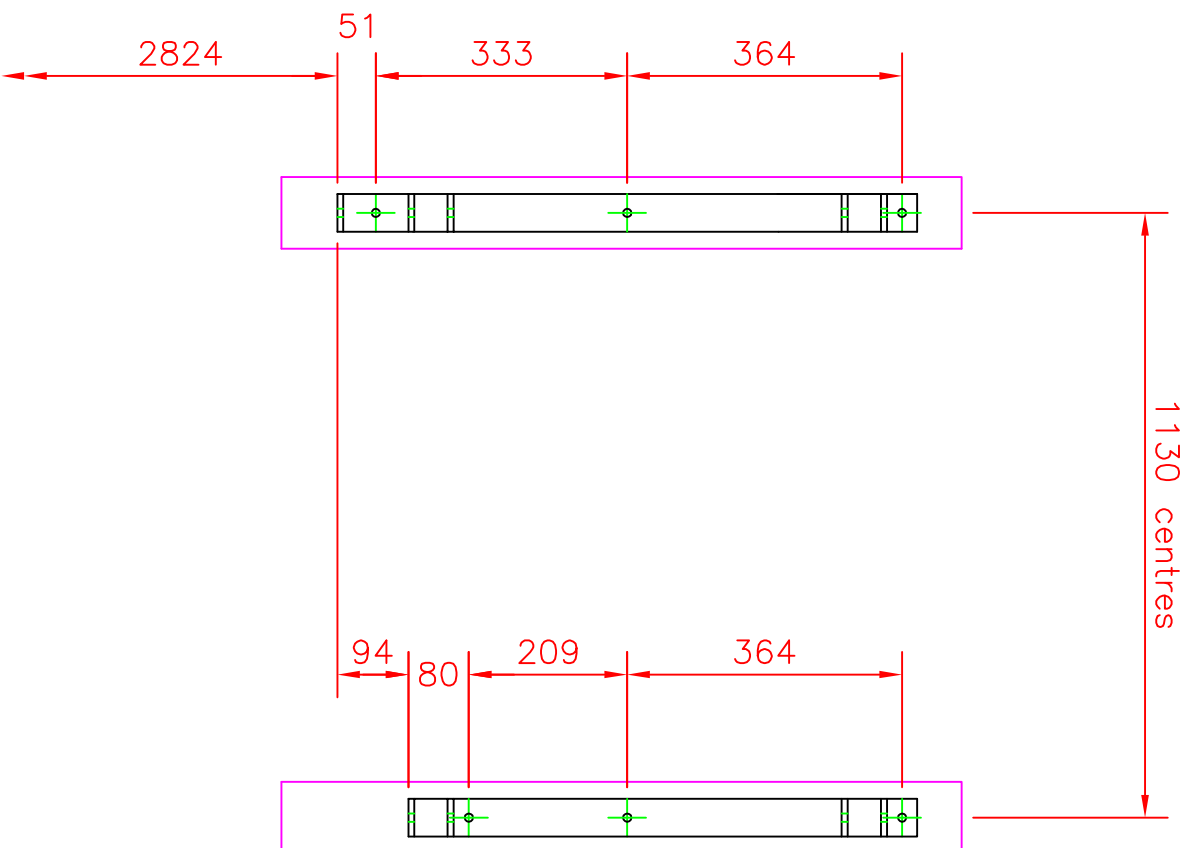
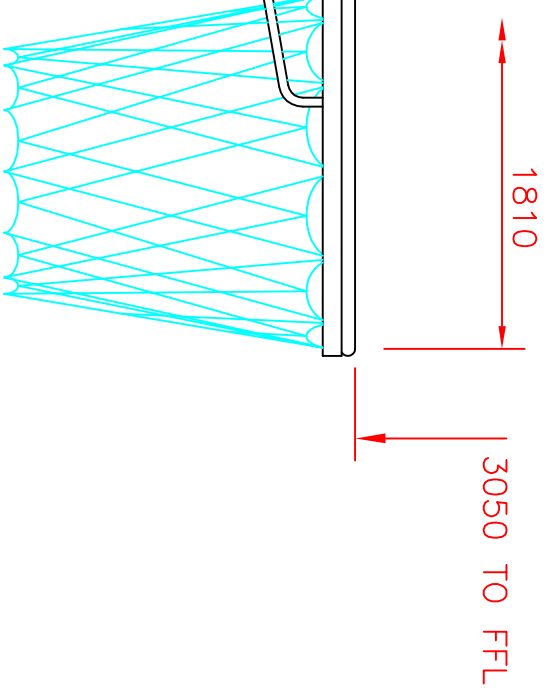


Purple indicates 2no vertical steels required @ 1.13m centres for b/ball goals.



Wall / steel is to be capable of accepting 205kgs (this includes a 90kgs person hanging on to the ring)



Side view looking at practice goals

Section view on arrow 'A-A' showing required steelwork for practice goals

© Continental Sports Limited  
The copyright of this drawing and any supplementary information issued shall remain vested in Continental Sports Limited. It shall not be passed to any other party without the express written consent of an authorised director of Continental Sports Limited.

Tolerances as detailed on SPE001 unless noted on the dimension. ALL DIMENSIONS ARE GIVEN IN MILLIMETRES. DO NOT SCALE OFF DRAWING.

<b>CONTINENTAL</b>			
Continental Sports Limited Paddock, Huddersfield HD1 4SD Tel: Huddersfield (01484) 542051 Fax: (01484) 539148 Website: <a href="http://www.continental sports.co.uk">http://www.continental sports.co.uk</a> E-Mail: <a href="mailto:sales@continental sports.co.uk">sales@continental sports.co.uk</a>			
<b>1200mm PROJECTION PRACTICE HT. ADJ. BASKETBALL GOALS. Loadings &amp; Vertical Steelwork Requirements.</b>			
scale	date	dr	rev
1:10	19/09/16	S.McL	
projection	dwg no		
	SH-08j		