

**NOTES**

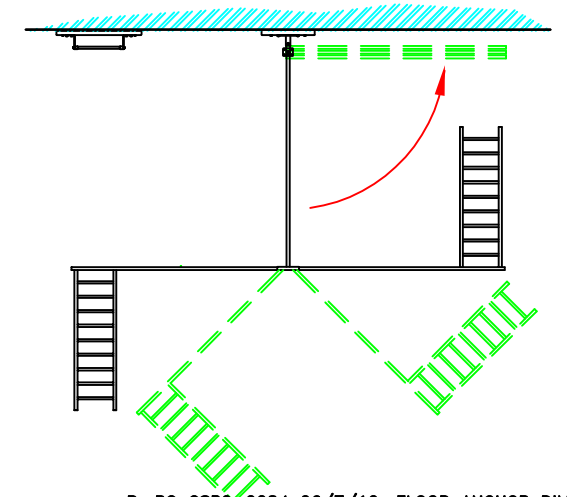
Dimensions repeat as detailed opposite ctr line if not shown.

If the top of the underfloor heating pipes are within 50mm of the F.F.L., the following applies:

For each of the 11no floor socket locations, a 300 x 300mm square area should be left clear of underfloor heating pipes. Also leave clear where wall ladder occurs.

\* The 381mm dimension shown on this drawing is on the basis that no projections / obstructions (radiators, whiteboards, trunking etc) will effect the wall ladder or frames folding back against the wall. If you have any issues please contact us to discuss further.

**Plan view of folding arrangement**



B: RC CSP2-2284 26/7/12. FLOOR ANCHOR DIMENSIONS UPDATED. NO OBSTRUCTIONS NOTE ALSO ADDED TO DRAWING.  
 A: RC CSP2-2208 15/6/09. VARIOUS FLOOR ANCHOR POINTS ADDED FOR 'Y' POSITION. DRAWING UPDATED.



Continental Sports Limited  
 Paddock, Huddersfield HD1 4SD  
 Tel: Huddersfield (01484) 542051 Fax: (01484) 539148  
 Website: <http://www.continentialsports.co.uk>  
 E-Mail: [sales@contisports.co.uk](mailto:sales@contisports.co.uk)

**TIMBER FOLDAWAY CLIMBING FRAME (THREE GATES), Floor socket locations, inc ladder.**

Tolerances as detailed on SPE001 unless noted on the dimension. ALL DIMENSIONS ARE GIVEN IN MILLIMETRES. DO NOT SCALE OFF DRAWING.

scale	date	dr	rev
1:20	11/1/06	RC	B
projection	dwg no		
	448-29		

© Continental Sports Limited  
 The copyright of this drawing and any supplementary information issued shall remain vested in Continental Sports Limited. It shall not be passed to any other party without the express written consent of an authorised director of Continental Sports Limited.